

Pediatric Strip Crown Instructions

1. Prepare tooth as needed for removal of dental caries, then prepare tooth with undercuts.

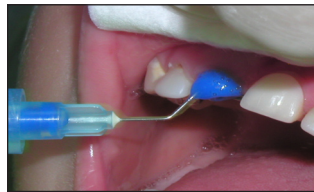


Thin interproximal walls
Parallel interproximal walls provide good contacts
Plastic strips off easily leaving a smooth polished surface
Perfect for repairing chipped corners and edges
Easy to control shade with light cure composites.
Natural anatomy.

2. Size crown establishing good contacts, trim with crown scissors as needed.



3. Prepare tooth with enamel etch, and dentin bonding agents as preferred.



4. Vent crown surface to allow excess composite material to flow out.

5. Fill crown with composite material of choice, then seat crown using finger pressure.



6. Light cure crown and remove any excess material from margins



Strip Crowns are an easy chair side procedure, and final restorations are both esthetic and durable.

7. Use an explorer to make a cut on the lingual surface of the crown, then strip off crown.
8. Finish crown as needed.